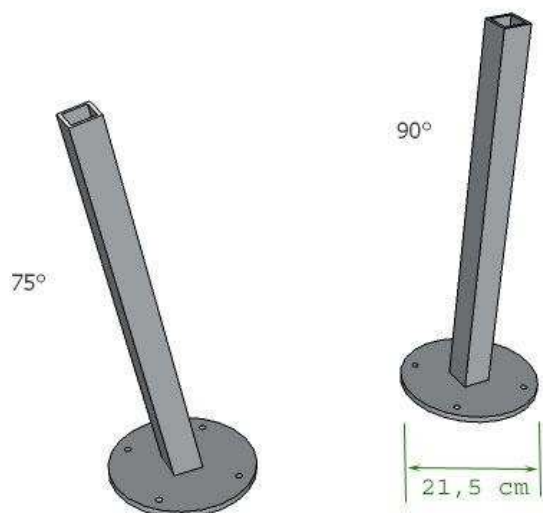


Installation round support and base plate



The 'Ingenua' round support is available in two versions

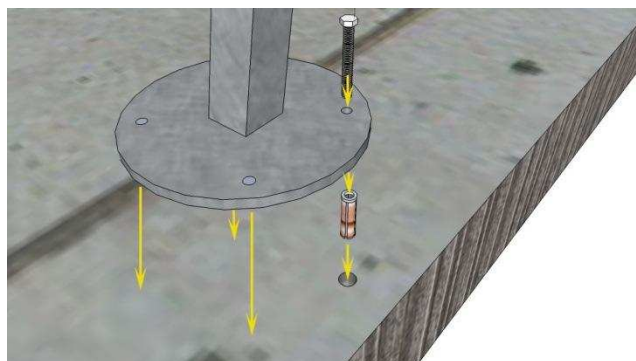
1. Support 75°
2. Support 90°

A 'base plate' is optionally available as well



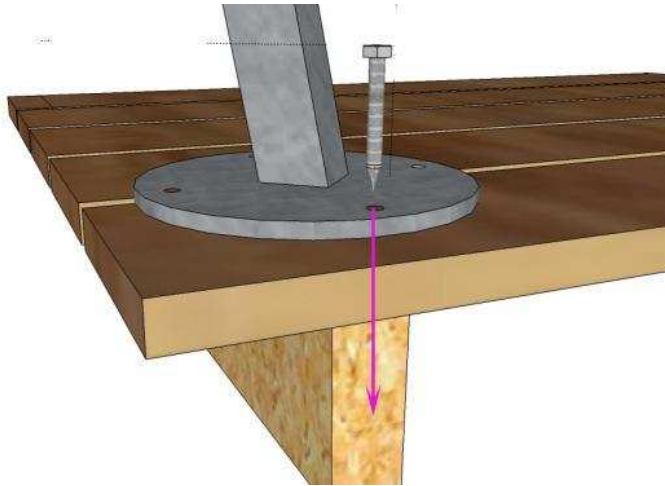
Use of the supports:

The 'Ingenua' supports can only be used on a very solid and firm surface (e.g. concrete floor)



For a good fixation to concrete you can use special screws with enlargement flanges or spike teeth with adequate metric metal screws. Do not use plastic plugs.

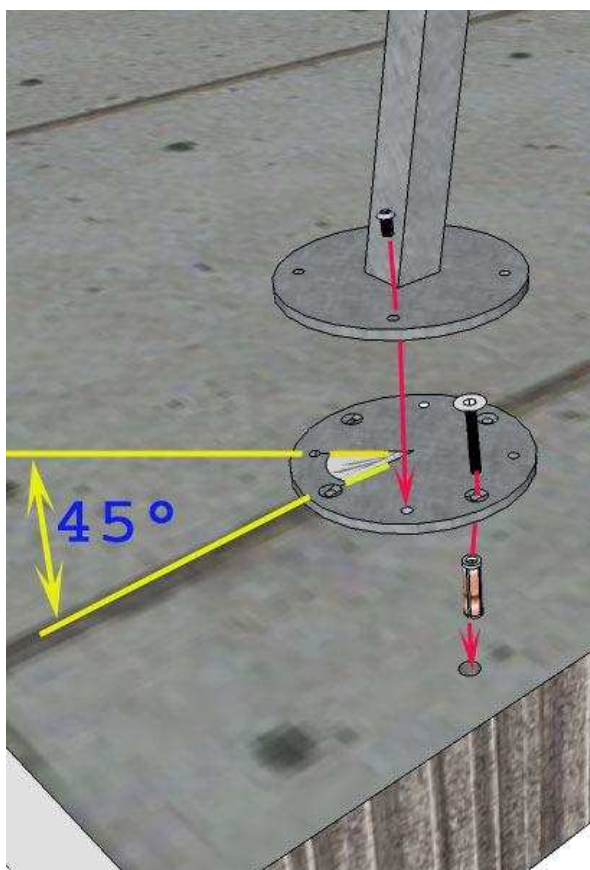
In case of doubt, contact a specialist in fixation materials



The 'Ingenua' supports can also be fastened to a wooden planked floor if at least 2 of the 4 screws reach the underlying solid construction (carrier beam or heavy metal frame)

Application optional base plate

If the support is screwed directly to concrete or to another construction, it is difficult to remove it temporarily (e.g. during wintertime)



If need be, the base plate can be used to simplify the removal of the support. It can be fastened to the concrete or the construction by means of the special fixation materials. Afterwards, the support can be mounted onto the base plate by means of metal screws that can easily be removed. As a result, during wintertime only the base plate, which because of its limited thickness (8 mm) is neither physically nor aesthetically experienced as hindering, remains.

Support to base plate: button head screws M10 x 16 are delivered together with base plate.

Base plate to concrete: Use M8 x 60 with conic head and spike teeth (not included)

Warning: In order to mount a sloping support (75°) in the right direction towards the sail point (see direction concrete anchor), the base plate must be turned 45°.

The support is now ready for use.